

CLOWN PHOBIA



TECHNICAL RIDER

Opposable
Thumb
THEATRE

www.opposablethumbtheatre.com

COULROPHOBIA TECHNICAL RIDER

CONTENTS

General	2
Dressing Rooms	2
Stage	2
Lighting	2
Sound	2
Contact	2
Lighting Plan	3
Plot Sheet	4

GENERAL

Please note that if any of the following cannot be achieved please discuss with our technical manager as more get in time, staff or preparation may be required.

The show runs straight through (approx 75 minutes).

Total get in time should be a minimum of 6 hours prior to house opening.

The above time is based on having a full pre-rig, plot and the stage / masking clear, clean and in position.

2 members of technical staff are required to help unload and load show and 1 technical staff member required work alongside our team of 1 technician and 2 performers during set up.

Show contains audience participation and therefore unsuitable for a raised stage. There needs to be safe clear access between stage and audience seating.

DRESSING ROOMS

Please provide the company on arrival with:

1 large dressing room with makeup mirror, shower and towels.

Tea and coffee facilities.

Clothes washing and drying facilities for runs longer than two days.

STAGE

The production requires a clear performance area of 8 metres wide x 7 metres deep with a height of 4 metres. The show is very adaptable and it may be possible to reduce the depth and width of the performance area but please advise us in advance so we can determine.

2 Flats / Legs required. (1.5 metres wide x 3-4 metres high approximately) Stage left and Stage right. Please see indication on lighting plan. Page 3.

Please advise if your load in dock is not direct to street level as we may need to allow extra time for get in.

The setting line indicated on lighting plan should be approximately level with the first row of audience seating. Please confirm position before any lighting pre-rig takes place so we can make any adjustments necessary.

LIGHTING

Please see the lighting plan on Page 3.

Pre-rig with gels and plot required. If gels are not available please let us know in advance as some can be substituted for similar colours and we may need to source some. DMX runs into our light board and soft patch can be done during setup.

SOUND

For shows where we drive to the venue, we have powered speakers that run into our sound card but may need XLR extensions depending on the space and distance to tech desk. For Shows where the show is transported by haulage, we require 2 onstage powered speakers on stands.

Show is run from Mac using QLab.

TRANSPORT

The show will be transported either by the company or via an international haulage company.

The scenography, props and puppets travel in 5 large cases:

5 flight cases

3 Black cases on wheels, no brakes:
– 124 x 106 x 64cm @ 100kg

1 Black case on wheels, no brakes:
– 105 x 106 x 64cm @ 80 kg

1 large White box, no wheels:
– 210 x 95 x 33cm @ 120kg '.

Show is run from Mac using QLab.

CONTACT

Company manager:

Dik Downey

+44 7921 863743

opposablethumbtheatre@gmail.com

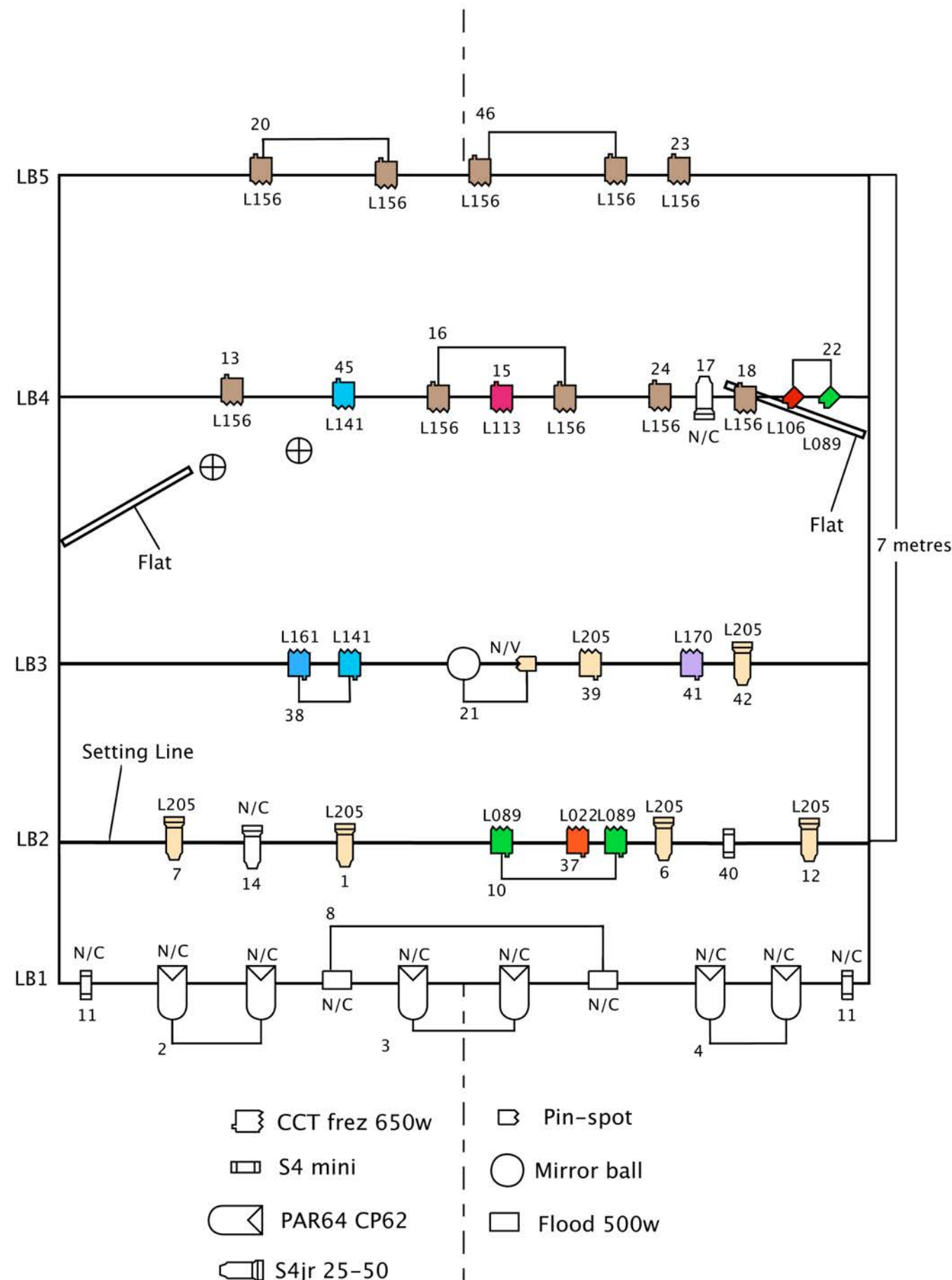
Company Technician:

Chris Collier

+44 7786 080234

christopher.collier.is@googlemail.com

COULROPHOBIA LIGHTING PLOT



COULROPHOBIA PLOT SHEET

Ch.#	Dim	Type	Colour	Focus
LB1				
11		S4mini	R86	The Tanoys
4		2xPar64, cp62	N / C	Front DS Right
8		Flood, 500w	N / C	Houslights
3		2xPar64, cp62	N / C	Front DS Center
8		Flood, 500w	N / C	Houslights
2		2xPar64, cp62	N / C	Front DS Left
LB2				
12		S4jr, 575w	L205	Front – Center Box
14		S4jr, 575w	N / C	Diks Spot Left
6		S4jr, 575w	L205	Dressing Room Door
37		CCT fres. 650w	L022	Western Wash
10		CCT fres. 650w	L089	Poco – Cross to Left
10		CCT fres. 650w	L089	Poco – Cross to Right
1		S4jr, 575w	L205	Front – Lift
40		S4mini	N / C	Puppet Booth
7		S4jr, 575w	L205	Front – Hairdressing
LB3				
42		S4jr, 575w	L205	Front / Side Dressing Room
41		CCT fres. 650w	L170	Front / Top Disco – DS Right
39		CCT fres. 650w	L205	General / Top
21		Pin-spot	N / C	Mirrorball
21		Mirror-ball		
38		CCT fres. 650w	L161	Ocean – Blue Wash
38		CCT fres. 650w	L141	Ocean – Blue Wash
LB4				
22		2xPin-spot	L106 / L089	Mirrorball
18		CCT fres. 650w	L156	Back Light DS Right
24		CCT fres. 650w	L156	Back Light – Puppet Booth
16		CCT fres. 650w	L156	Back Light DS Centre Right
17		S4jr, 575w	N / C	Adams Spot Right
15		CCT fres. 650w	L113	Top – Birthday / Bistro
16		CCT fres. 650w	L156	Back Light DS Centre Left
45		CCT fres. 650w	L141	Ocean – Blue wash – Side
13		CCT fres. 650w	L156	Back Light DS Right
LB5				
23		CCT fres. 650w	L156	Back Light US Right
46		CCT fres. 650w	L156	Back Light USC Right
46		CCT fres. 650w	L156	Back Light USC Left
20		CCT fres. 650w	L156	Back Light US Right – Dressingroom
20		CCT fres. 650w	L156	Back Light US Right – Dressingroom